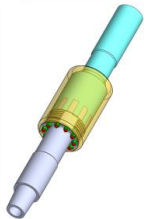


WellSafe Systems

WellSafe Categories

Designed to prevent severe situations due to rig compensation failure

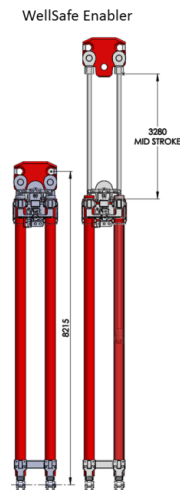
Installer



Explorer

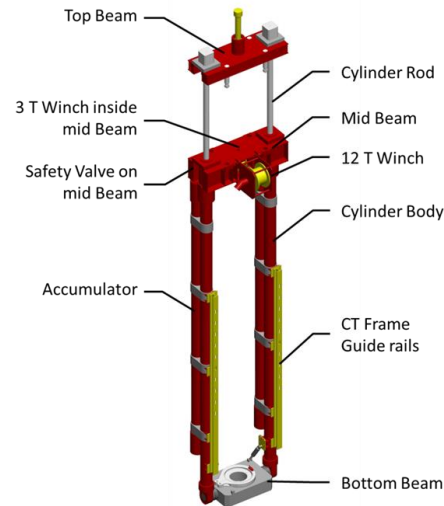


Enabler



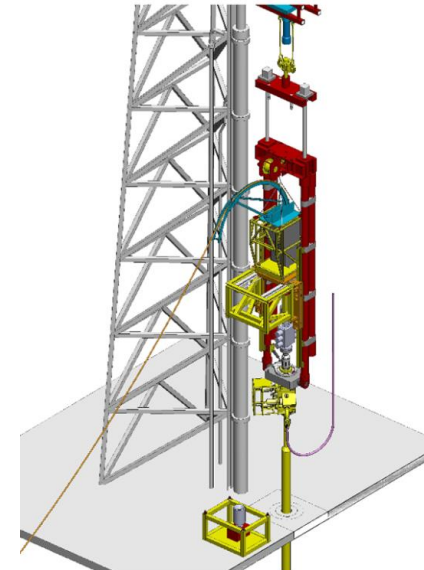
Completer

WL Mode



Completer

CT Mode



WellSafe Systems

Outline system specifications

	WellSafe Completer	WellSafe Enabler	WellSafe Explorer	WellSafe Installer	
Length - strong mode (during rig-up)	12,7 m	8,2 m	4,7 m	3,5 m	
Utility Equipment	2 x 2,5 m	1 x 1,5 m	1 x 1,5 m	Non	Flexible Placement
Tension capacity during "locked to bottom operations"	10-150 ton	10-150 ton	10-150 ton	50-200 ton	Adjustable
Strong mode capacity (during TH Inst.)	350 ton	350 ton	350 ton	650 ton	
Total cylinder stroke length	10 m	6 m	3 m	NA	
Compensating capacity (rig heave)	5 m	3 m	3 m	NA	
CT/WL handling winch capacity	12 ton	6 ton	6 ton	NA	
Tool handling winch capacity	3 ton	3 ton	3 ton	NA	
CT/WL Work Window Height	10 m	10 m	10 m	NA	Fixed in all modes

WellSafe - Patented Technology